

THE COURTYARD AT LA BREA

1145 North La Brea, West
Hollywood, CA 90038

Matthew Hu
Delaney Faherty
CRP 202
Beate von Bischopinck

Site Information

Year of Completion: 2014
John V. Mutlow Architects, Inc.
Size: 50,000 sq ft
Density: 85.9%
32 residential units
Mixed-Use in Commercial Area

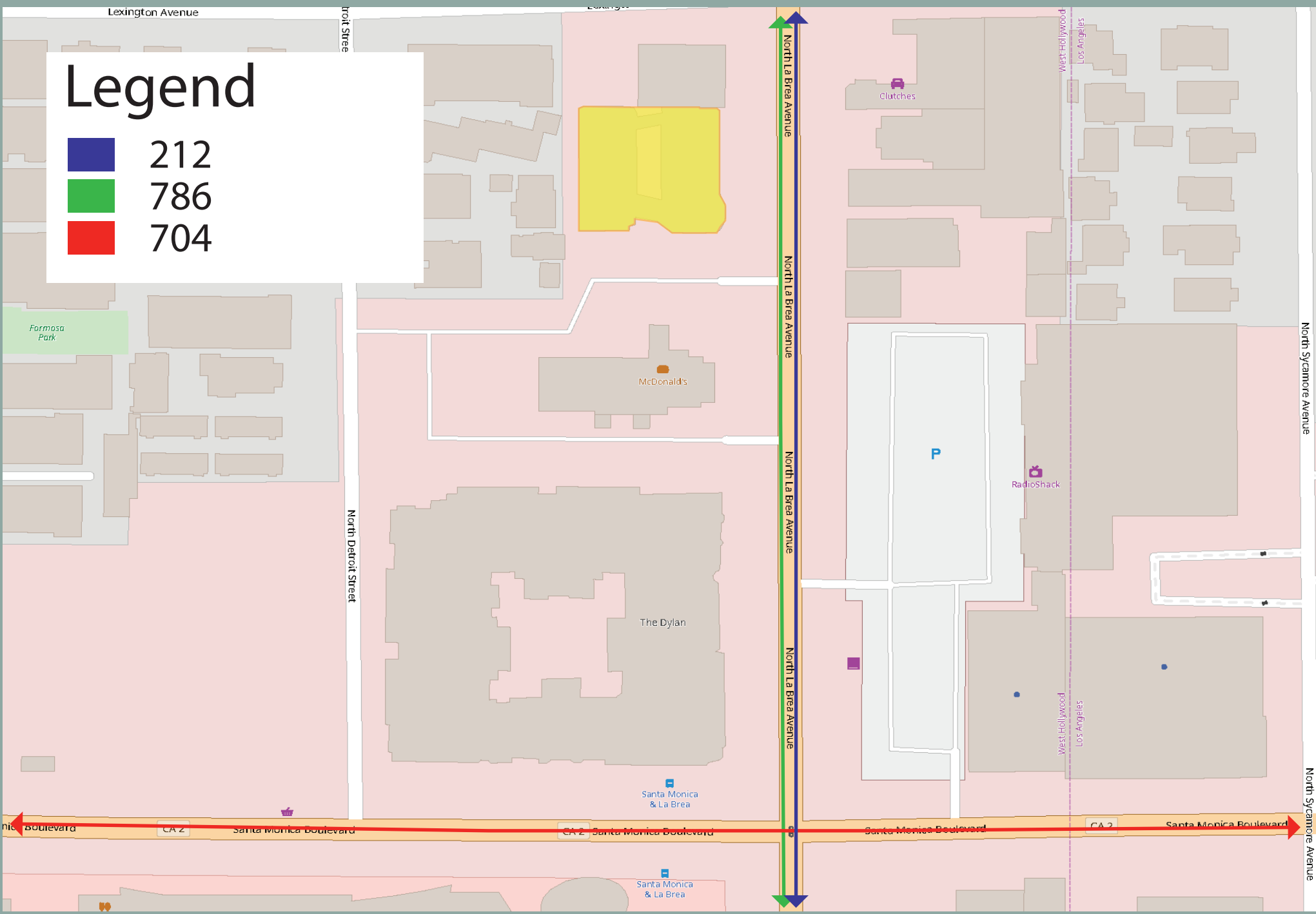
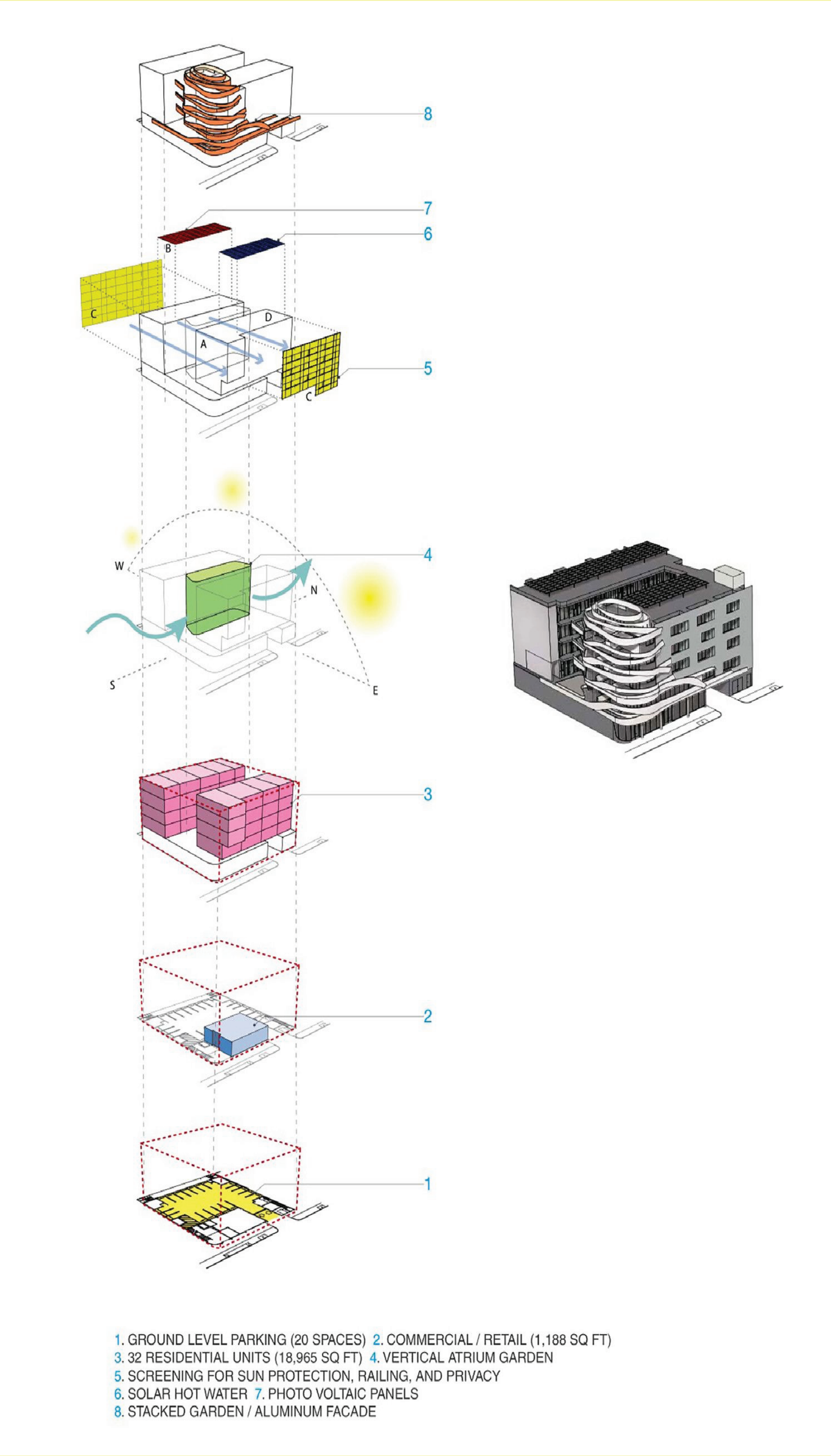


Users

Residents are low or very low income, former homeless LGBT youth, and people with disabilities and/or AIDs

Transportation

There are three Metro bus stops: 312, 786, and 704 near the site. Two are located on La Brea and one on Santa Monica Boulevard. All are a two minute walk from the site. The 786 route goes from the UCLA campus to Hollywood, two popular destinations.



Lesson Learned

Our project optimizes on density but lacks open space whereas there is an ample amount of green space on the La Brea site.