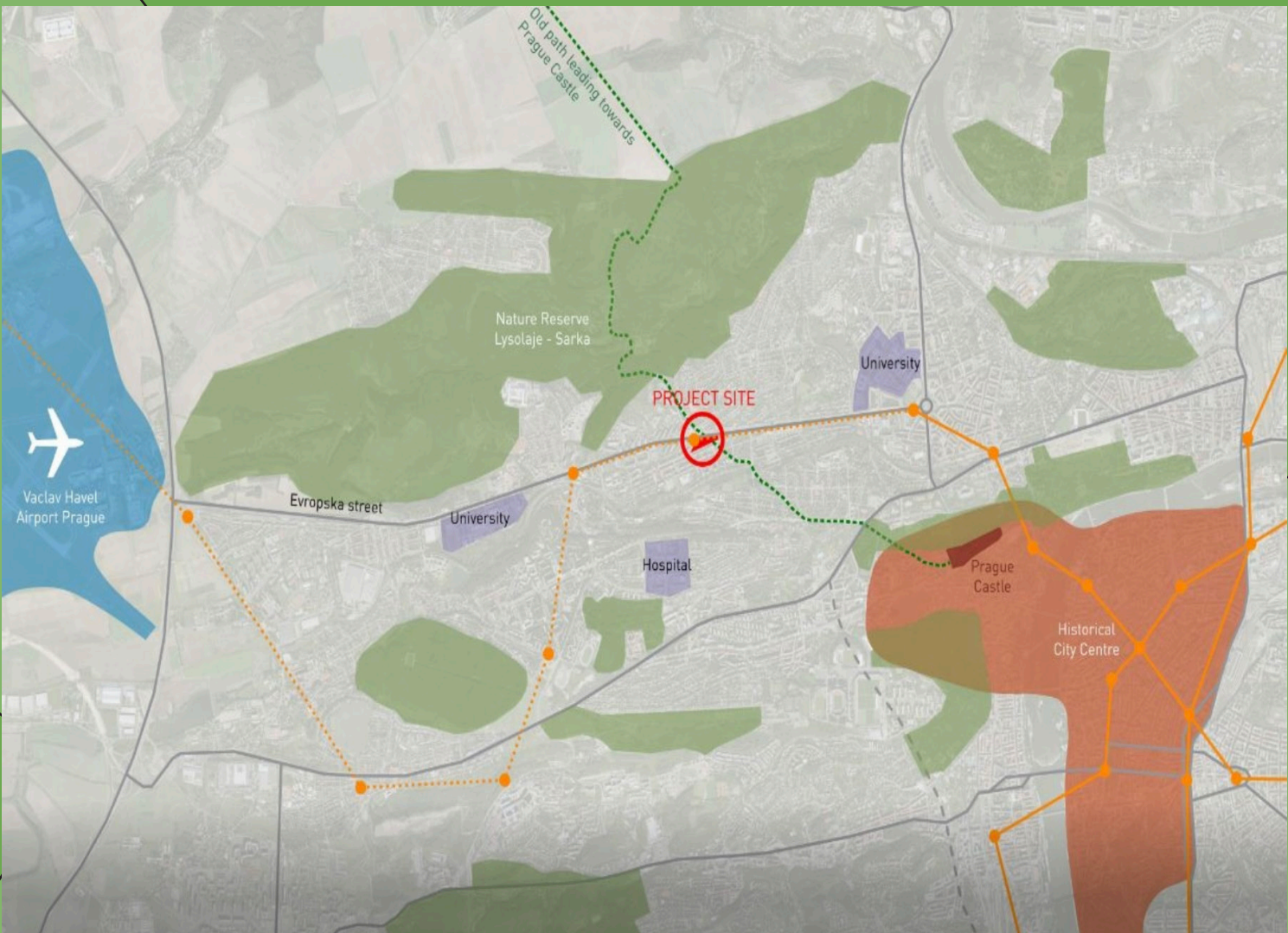


Project Statistics:

Year: 2013
Client: KKCG Real Estate
Architect: Maxwan
Project Size: 1.2 ha or 2.9 acres
Gross Area Ratie: 41,000 m2
Uses: Retail/Services and Office
Service/Retail: 250 m2 gfa

Red Hill Rise Proposal Prague, Czech Republic



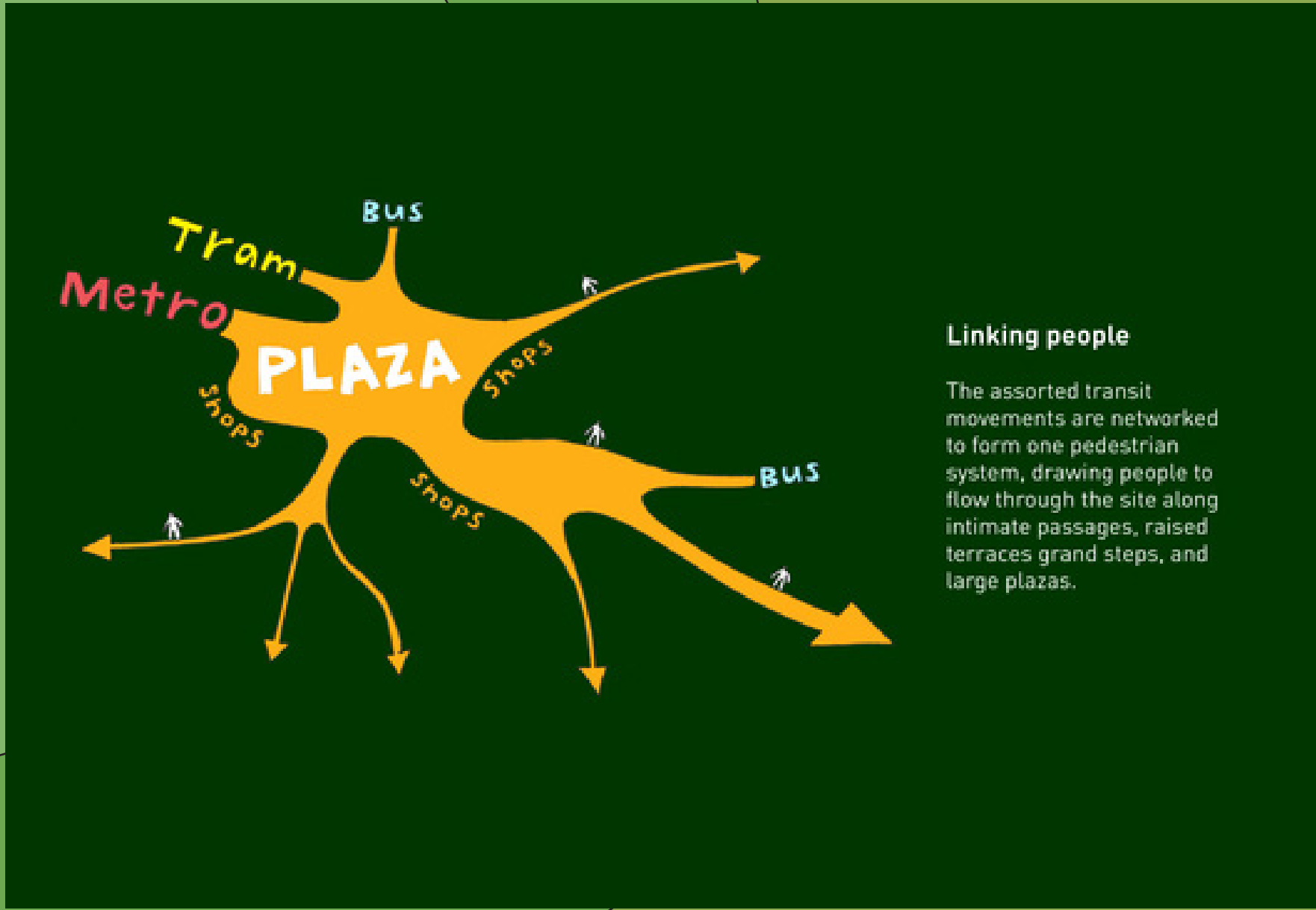
Takeway #1:
Connecting development to existing green space within larger context

Location:
Prague, Czech Republic
- residential area, located on top of a central metro station

Takeaway #2:
Integrate a typography to outdoor space. Using outdoor space for seperation as well as to be inclusionary and serve as a corridor to increase foot traffic



Takeaway #3:
While the use of multiple geographic shapes prevents overwhelmingly large buildings, they can create negative wasted space in corners



Openings and plazas allow for pedestrian circulation and increased foot traffic on the retail level.



The site is located on a slope with a 14m height difference. The site is located in a main residential area. There is high transparency and connectivity inside and outside buildings.